



# GREAT BARRIER REEF LEGACY

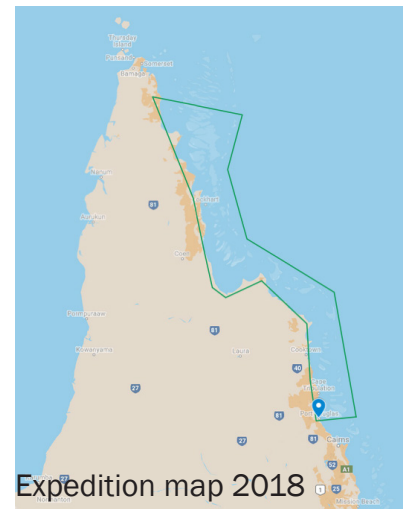
**Search for Solutions**  
15 - 30 November 2018

## Invitation to schools to participate

**Ask a scientist ...** *“So, Dr Veron, what does Acropora mean”*

**Ask for CoralWatch data day by day ...**

**Ask for a school visit after the expedition - incl. 360 VR Experience**



In a few days, GBR Legacy's second expedition 'Search for Solutions' will set sail. The world's top coral reef scientists, innovators, educators and media communicators are joining a collaborative research expedition to the northern Great Barrier Reef this month to tackle the critical issue of mass coral bleaching. We are excited to support and participate in **4 different citizen science projects** that will help collect data on the current state of the complex and beautiful ecosystem that is the Great Barrier Reef!

1. We will conduct coastline **Mangrove Watch** surveys to determine the abundance and density of crucial mangrove habitats.
2. Coral Health Chart surveys will be carried out in the remote far northern section of the Great Barrier Reef for use in the University of Queensland's **CoralWatch** program
3. Data will be collected for the Great Barrier Reef Marine Park Authority's **Eye on the Reef** and Sightings Network projects
4. Great Barrier Reef Legacy will collect debris and rubbish on remote islands and coastline to provide **Tangaroa Blue** with essential data on the origin and abundance of marine debris within the Great Barrier Reef Marine Park.



[2018 - Search for Solutions](https://www.greatbarrierreeflegacy.org/2018-search-for-solutions)

[2017 - Search for Supercorals](https://www.greatbarrierreeflegacy.org/2017-search-for-supercorals)

<https://www.greatbarrierreeflegacy.org/super-corals>

<https://www.greatbarrierreeflegacy.org/mediaCoverage>

[Watch an overview](#)

[Follow the trip on social media](#)

**More info**



# Invitation to schools to participate

## Ask a scientist ... these are our experts on board

**Dr. Charlie Veron** is a prominent marine scientist known as the 'Godfather of Coral,' having discovered 20 percent of all coral species in the world. On last year's trip, a new coral species (the first one in 30 years) and the first definitive 'super coral' species, *Acropora tenuis*, was found surviving at all reef sites regardless of the level of bleaching impact.

Charlie has worked in all the major coral reef regions of the world, participating in 66 expeditions and spending 7,000 hours scuba diving. Veron was formerly the Chief Scientist of the Australian Institute of Marine Science and has authored over 100 scientific articles, including 14 books and monographs.

**John Rumney**, Expedition Leader and Managing Director



John Rumney and Dr Charlie Veron



### **Professor Justin Marshall**

discovered the world's most complex colour vision in mantis shrimps (stomatopods) 30 years ago. Since then he has been obsessed with all things colourful. How do animals, stomatopods, reef fish, parrots, any animal use colour in their everyday life. Much of his work focusses on the marine environment, in particular reef systems and the deep-sea. As part of this effort he has become acutely aware of man's influence on both these environments and started CoralWatch, the world's largest citizen-science-based coral health assessment program (79 countries, 13 languages) 15 years ago. As project leader of CoralWatch he is part of the education team on-board this trip. He will provide the opportunity for schools and students to follow the trip, ask questions from any of the scientists on board and provide

day-by-day data and assessment of the reef areas they visit. Ask a scientist and your question and answer in situ will be filmed and sent back to your school after the trip. CoralWatch will come to your school and immerse you in 360 VR of the reef taken during this trip and through previous films and documentaries Justin has been a part of.

**Professor Peter Vize**, collaborating with Dr Selina Ward and Dr Peter Harrison will be experimenting with spawn culture techniques for a large-scale effort to use spawn to reseed damaged reefs. Wild spawn will be collected, reared and brought back live to be taken back to the University of Queensland for further studies.

**Dean Miller**, Expedition Coordinator and Director for Science and Media

**Pete West and David Hannan**, World-renowned ocean filmmakers direct from the TARA PACIFIC expedition

**Justin Gilligan**, Australian Geographic Nature Photographer of the Year 2017

## GBR Legacy - Search for Solutions expedition 2018 Get your students involved!

**Do you have questions about corals and their environment or how this affect each other? Ask the scientists!**

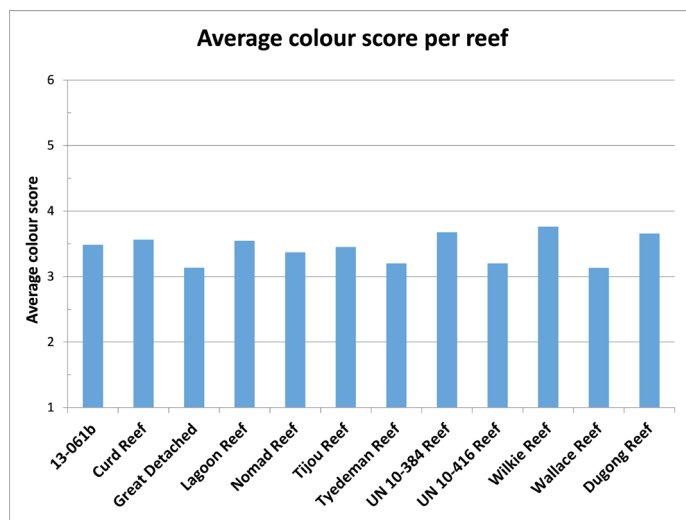
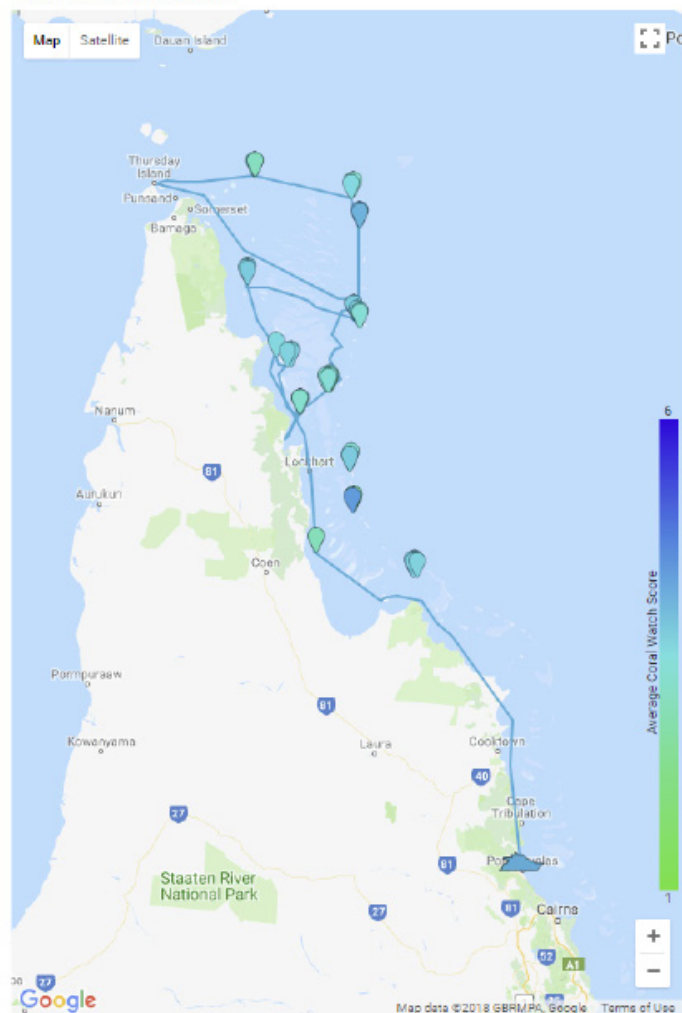
- Curious about how and what data you can collect with the Coral Health Chart? Let us know and we will explain.
- What happens with the data collected and who will be using it?
- Like to compare the CoralWatch data between the reefs the expedition visits and see for yourself if the reefs in the far northern GBR are healthy? Or wondering if the reef compared to last year's expedition is in a better state? We can provide you with updates and data from the reef.

# Invitation to schools to participate

## Track CoralWatch Coral Health Chart data

### GBR Legacy - Search for the Super Corals expedition 2017

#### EXPEDITION MAP



In 2017, CoralWatch project manager Monique Grol joined the Search for the Super Corals expedition and collected Coral Health Chart data on 12 reefs.

#### CoralWatch data

- All data entered in Excel during the field expedition.
- On return, all data uploaded onto CoralWatch database and online accessible to the world via the CoralWatch website ([www.coralwatch.org](http://www.coralwatch.org)).
- Daily updates created during the expedition for media outreach.
- Average colour score per reef between 3 and 4 which indicates healthy reefs.

### GBR Legacy - Search for solutions expedition 2018

#### Get your students involved !

Justin Marshall will be collecting Coral Health Chart data on this trip and revisit some of the reefs from 2017. This will provide opportunities to compare coral colour scores (as an indicator of coral health) on reefs over time, but also between reefs. Contact CoralWatch if you like to receive the data.

#### Contact details:

CoralWatch, Dr Monique Grol and Mrs Diana Kleine, The University of Queensland. [info@coralwatch.org](mailto:info@coralwatch.org)

Professor Justin Marshall - Director of CoralWatch and ARC Laureate Fellow at The University of Queensland. [Justin.marshall@uq.edu.au](mailto:Justin.marshall@uq.edu.au), +61 423 024 162, [WWW.ECOVIS.ORG](http://WWW.ECOVIS.ORG)



CoralWatch is a non-profit citizen science organization based at The University of Queensland. The program integrates global monitoring of coral bleaching with education about coral reef conservation. [WWW.CORALWATCH.ORG](http://WWW.CORALWATCH.ORG)